

FLOWER PHOTOGRAPHY



Larry Petterborg
April, 2013



QUESTION?

WHO DOESN'T LIKE FLOWERS?











FLOWERS ARE

1. BEAUTIFUL
2. EVERYWHERE
3. INFINITELY VARIABLE
4. STATIONARY
5. COOPERATIVE
6. PATIENT
7. SHAMELESSLY SHOWY

WHAT IS A FLOWER?

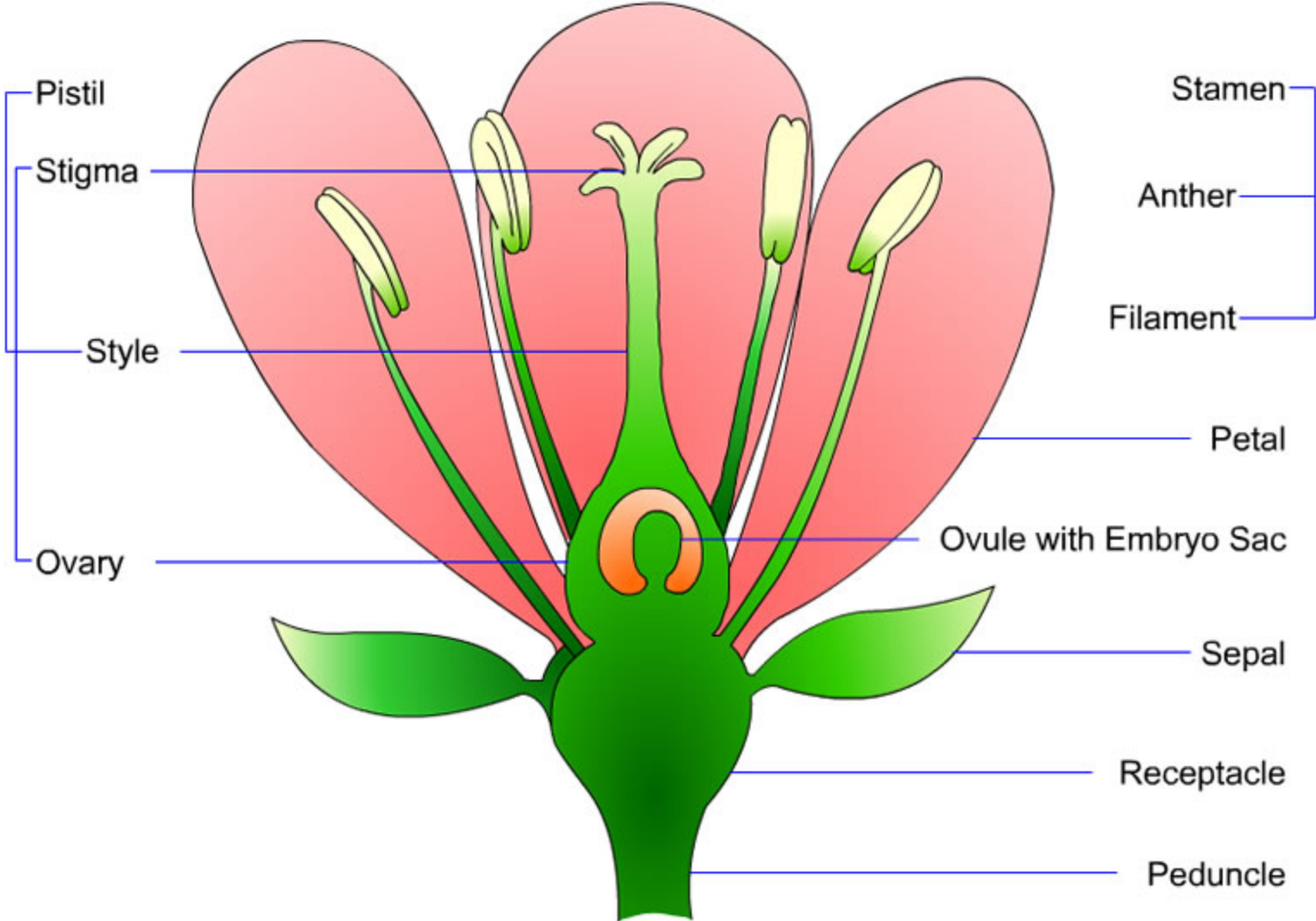
ANSWER:

THE REPRODUCTIVE PARTS OF A PLANT

SO, WHAT DOES THAT MAKE A FLOWER
PHOTOGRAPHER?

A BOTANICAL PORNOGRAPHER?

FLOWER PARTS



FLOWER FOTOGRAFY: TIPS AND SUGGESTIONS

HELPFUL ACCESSORIES/EXTRAS



FLOWER FOTOGRAFY: TIPS AND SUGGESTIONS

HELPFUL ACCESSORIES/EXTRAS



FLOWER FOTOGRAFY: TIPS AND SUGGESTIONS

HELPFUL ACCESSORIES/EXTRAS



FLOWER FOTOGRAFY: TIPS AND SUGGESTIONS



HOW CAN THIS BE IMPROVED?

FLOWER FOTOGRAFY: TIPS AND SUGGESTIONS

1 **GET CLOSE**
GET LOW
GET DIRTY



FLOWER FOTOGRAFY: TIPS AND SUGGESTIONS

1. GET CLOSE



FLOWER FOTOGRAFY: TIPS AND SUGGESTIONS

1. GET CLOSE



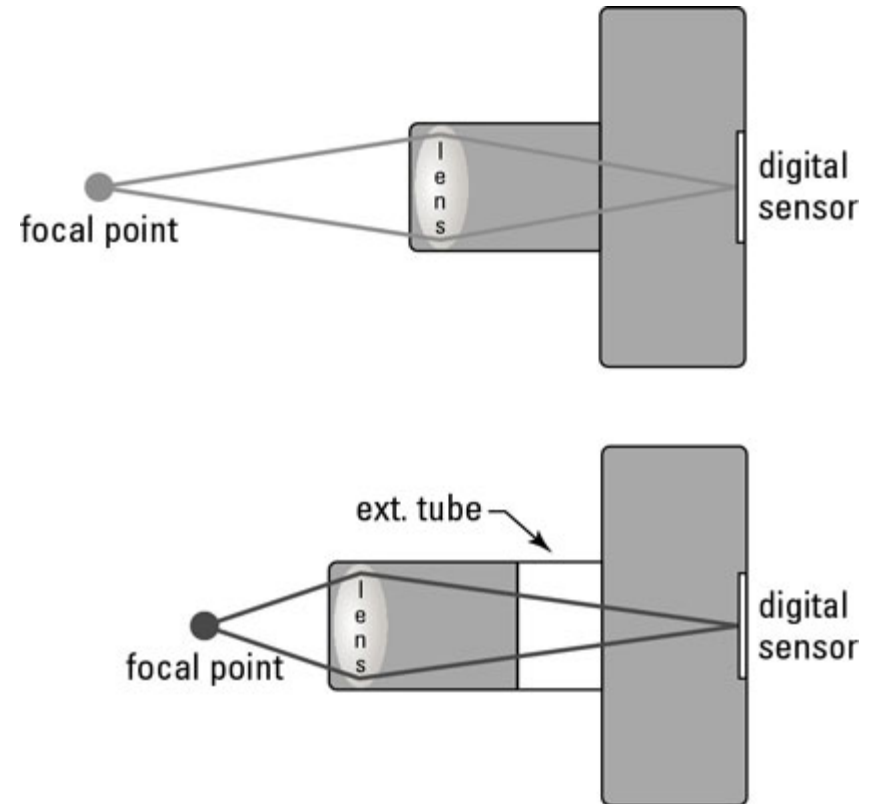
FLOWER FOTOGRAFY: TIPS AND SUGGESTIONS

1. GET CLOSE



FLOWER FOTOGRAFY: TIPS AND SUGGESTIONS

1. GET CLOSE



FLOWER FOTOGRAFY: TIPS AND SUGGESTIONS

#2. USE A TRIPOD

What is wrong with this picture?



FLOWER FOTOGRAFY: TIPS AND SUGGESTIONS

#2. USE A TRIPOD



FLOWER FOTOGRAFY: TIPS AND SUGGESTIONS

#3. USE REMOTE RELEASE

© The-Digital-Picture.com



FLOWER FOTOGRAFY: TIPS AND SUGGESTIONS

#4. TRY **MANUAL** FOCUS



FLOWER FOTOGRAFY: TIPS AND SUGGESTIONS

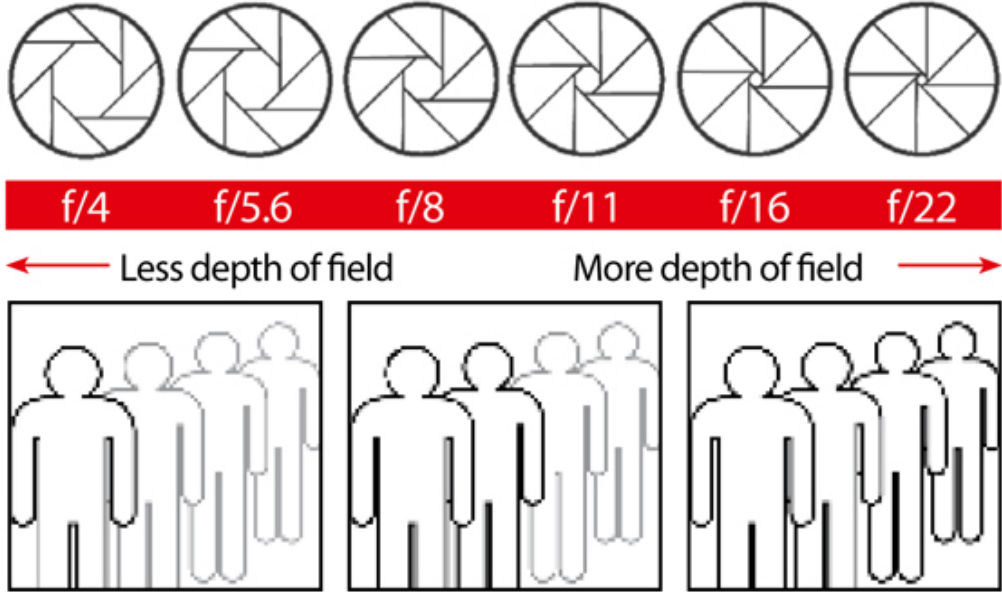
#5. USE LIVE VIEW (if you have it)



FLOWER FOTOGRAFY: TIPS AND SUGGESTIONS

#6. USE APERATURE PRIORITY

How aperture controls depth of field

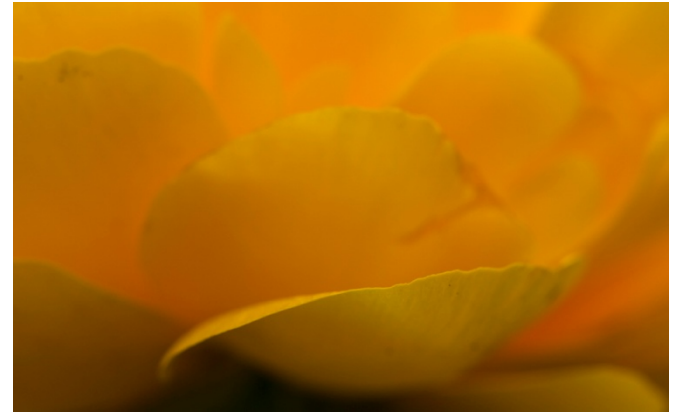
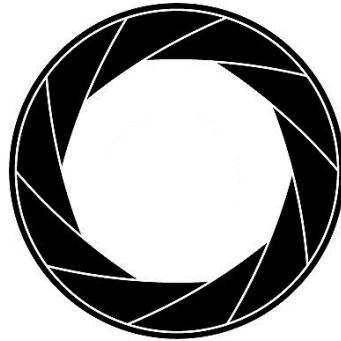


f/4 f/5.6 f/8 f/11 f/16 f/22

← Less depth of field More depth of field →

The aperture you use is the main factor in dictating how much of the scene appears pin-sharp. The narrower the aperture opening (and the larger the f/number) the more of the image will be in focus – and vice versa!

SHALLOW DEPTH OF FOCUS: LARGE APERTURE



MORE DEPTH: SMALL APERATURE



FLOWER FOTOGRAFY: TIPS AND SUGGESTIONS

7. MAXIMIZE IMAGE QUALITY

A. USE THE LOWEST ISO SETTING

B. SET WHITE BALANCE TO DAYLIGHT

C. SHOOT RAW



FLOWER FOTOGRAFY: TIPS AND SUGGESTIONS

7. MAXIMIZE IMAGE QUALITY

D. USE A POLARIZING FILTER



FLOWER FOTOGRAFY: TIPS AND SUGGESTIONS

#8. HOPE FOR OVERCAST SKIES (or a softbox)



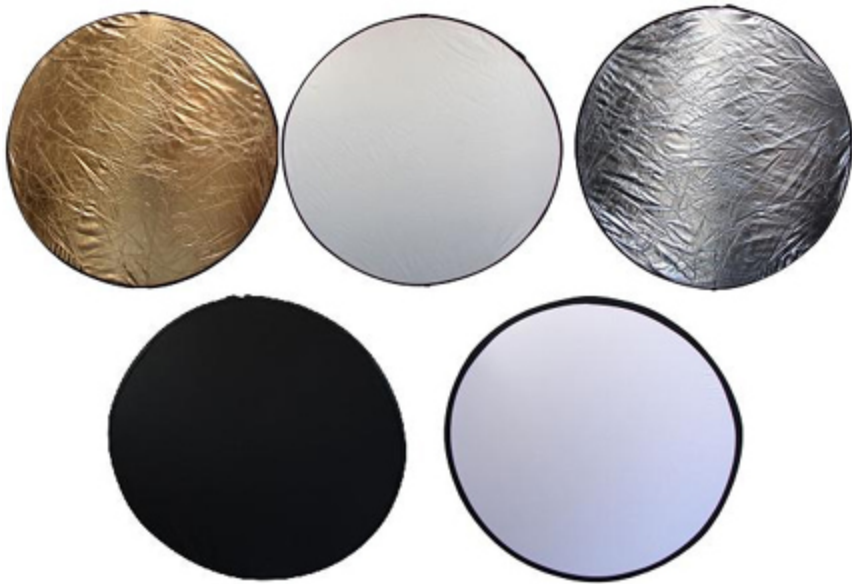
FLOWER FOTOGRAFY: TIPS AND SUGGESTIONS

OR, MAKE YOUR OWN SHADE



FLOWER FOTOGRAFY: TIPS AND SUGGESTIONS

#9. USE A REFLECTOR



FLOWER FOTOGRAFY: TIPS AND SUGGESTIONS

#10. THINK ABOUT FLASH



FLOWER FOTOGRAFY: TIPS AND SUGGESTIONS

#11. ELIMINATE DISTRACTIONS



FLOWER FOTOGRAFY: TIPS AND SUGGESTIONS

PAY ATTENTION TO THE BACKGROUND



FLOWER FOTOGRAFY: TIPS AND SUGGESTIONS



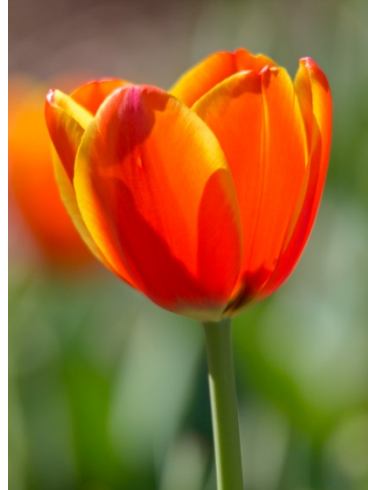
FLOWER FOTOGRAFY: TIPS AND SUGGESTIONS

#12. CONSIDER BACK LIGHTING



FLOWER FOTOGRAFY: TIPS AND SUGGESTIONS

#12. CONSIDER BACK LIGHTING



FLOWER FOTOGRAFY: TIPS AND SUGGESTIONS

#13. SHOOT EARLY IN THE DAY FOR DEW



FLOWER FOTOGRAFY: TIPS AND SUGGESTIONS

OR, CREATE YOUR OWN



FLOWER FOTOGRAFY: TIPS AND SUGGESTIONS

MAKE IT RAIN BY MASON RESNICK (ADORAMA LEARNING CENTER)



TRIPOD MOUNTED CAMERA
GARDEN HOSE
SHUTTER SPEED WAS 1/8 SEC

FLOWER FOTOGRAFY: TIPS AND SUGGESTIONS

#14. THE RULES OF COMPOSITION APPLY

a. AVOID THE BULLSEYE

b. USE LEADING LINES

c. REMEMBER THAT WARM COLORS PRECEDE
AND COOL COLORS RECEDE

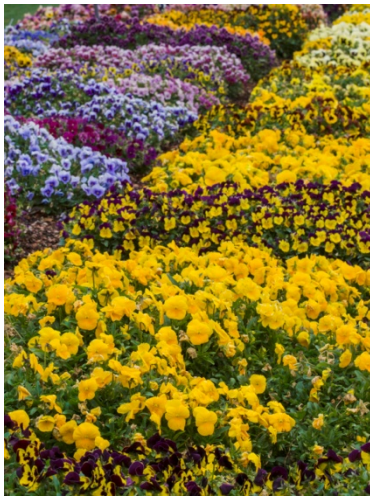






FLOWER FOTOGRAFY: TIPS AND SUGGESTIONS

#15. GET CREATIVE



FLOWER FOTOGRAFY: TIPS AND SUGGESTIONS

#16. AFTER EVERY SHOOT, I

A. DOWN LOAD AND BACKUP FILES

B. RECHARGE BATTERY

C. RE-SET CAMERA: ISO, WB, FOCUS, ECT...

QUESTIONS?

THE END

