

## “Creating Art from your Images”

**First Image:** 9524-2

Page 1



Make duplicate

Do another simple 12”x12” crop of the Dune Grass.

Next: Go to Filters – Artistic – Cutout.

Set Levels to 3

Edge implicity to 8

Edge fidelity to 2

Remember: There are many choices here to give the image a lot of variations.

When happy: Save the image with a specific title.

“Abstract Dune Grass – 12x12”

Add a mat.

Go to Image – Canvas size and add a stroke of Dark Gray sampled from the image. Make it .05”

Next: Add a .75” White mat all around.

Next: Add a .25 mat of Lt. Tan in the image to pull the color out.

Follow that with a 1.25” mat of White or Black, whichever is your choice and where you intend to hang the art.

Save the image and add White or Black to the title.





Make duplicate

Do another simple 12"x12" crop of the flower and cut out all the cactus to the right.

Desaturate a little to give the yellow stamens more realistic color.

Next: Select Image – adjustments – posterize and take it to level 8

Take brightness to 10

Next: Go to Filters – Artistic – Poster Edges.

Edge Thickness to 6

Intensity to 2

Posterization to 2

When happy: Save the image with a specific title.

“Cactus Blossom Poster – 12x12”

Add a mat.

Go to Image – Canvas size and add a stroke of Yellow sampled from the stamens in the image.

Make it .25”

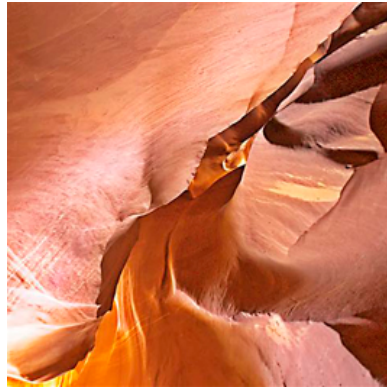
Next: Add a .05” Black mat all around.

Next: Add a 1.25 White mat all around.

Follow that with a .25” Warm Gray mat sampled from the top left of the image.

Save the image and add White to the title.





Make duplicate

This image is an abstract just as it is, but we will transform it into something more interesting. As you will see, we can change colors to fit a color scheme in a room.

Next: Go to Image – Adjustments – Replace color  
Sample a middle tone orange from the image.  
Next: Move the Hue slider to the left to -152  
Desaturate to -35  
Leave Lightness at 0

Next: Go to Image – Image Rotation and select Arbitrary and CCW 45 degrees. Note the background square remaining. You can change the color just like the step before or leave it to the selection we have.

This already an interesting piece that we could simply save as is. Check the image size. Re-size if needed. We will use 20”x20” because it is the resident size.

When happy: Save the image with a specific title.  
“Antelope Twist – 20x20”

Once again, let’s add a mat.

Go to Image – Canvas size and add a stroke of Orange sampled from the image. Make it .5”

Next: Add a .75” Red mat all around.

Next: Add a 1.5” Dark Red mat.

We can now save this as another piece of art under the same name but add Red to the title.



**Now:** Let's take this another step and see what happens. My favorite Filter is Artistic – Cutout because it allows you to restrict the image to a limited number of colors. We won't save this, but let's look at the possibilities.

First set the Levels to 2

Next: Progressively move the slide all the way up to 8

Pick the one that turns you on. Edge Simplicity and Fidelity on have minor effects.

**Now:** Let's play with another series of adjustments to demonstrate the tremendous number of variations available to you.

Using the same image, let's Invert it. Not particularly appealing, but once again, go to Image – adjustments – replace color

Sample the most prominent color and play with the Hue slider. When you have a pleasing color, either stop or take the eyedropper with the + and select of the color you want to change and have fun.

Each time you select another color, play with the slider to see if it is something you want.



Make duplicate image.

Because this image has so much White in it, we are going to invert it.  
Go to: Image – Adjustments – Invert  
VOILLA!! I think we have already created a piece of art; but let's crop it a little. I like square images, so let's crop to 12"x12".

Save the image as: "Inverted Dogwood Blossom – 12x12"

We could leave this image or add a mat again, but I want to experiment with some color change.

Next: Go to Image – Adjustments – Replace color  
Sample on bright Lavender of the left leaf.  
Next: Move the Hue slider to the left to -166  
Saturation to +72  
And set Lightness at -18

Lots of noise, so let's add some filters to mask the noise and continue our changes.

Go to Filters – Artistic – Poster Edges.  
Set Edge thickness to 5  
Intensity to 3  
Posterization to 4

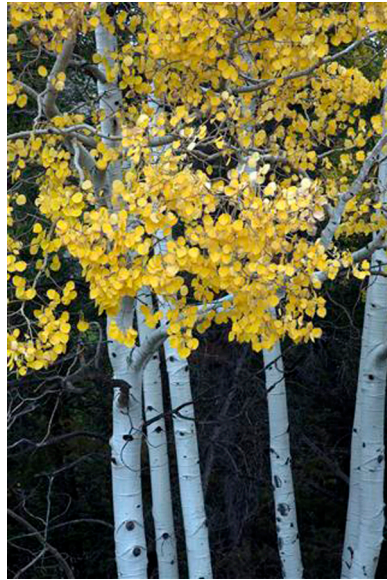
Let's add a mat to dress it up and complete the image.

Go to Image – Canvas Size. Add a White stroke of .1"  
Next: Add a Black mat or frame of 1.5"

Keep in mind, my art is generally very contemporary and follows my architectural training.

Now: Save the image with a specific title.  
"Inverted Dogwood Blossom – 12x12"-Black





Make duplicate image.

This image lends itself to a very coarse Painterly image, so we will go directly to: Filters – Artistic – Palette Knife.

Stroke Size: to 36

Detail 1

Softness 4

We could do much more with this image, but I like this treatment for Aspens. Don't be afraid to experiment. All it needs is a mat for a finished look.

Go to: Image – Canvas Size and add a .1" stroke of white to contrast with the image and to separate the image from the frame. I want something different this time, so;

Add .1" Black outside the White

Add 1.5" Dark color taken from the leaves. We want to compliment the image colors.

Cap it off with .5" Black Frame.

By continuously adding mats to your images, you get practice selecting real mats to compliment your photos. I frankly get bored with all the same white mats on everything shown in exhibits. Competition images are one thing, but to make viewing more interesting, try doing more with color.

Save the image: "Aspens in Palette Knife – Gold"







Make duplicate image.

This image is a still life arrangement of leaves and we could simply crop it into a piece of art, but I want to do more with it. Let's go directly to: Filters – Artistic – Cutout.

Levels to 5

Edge Simplicity to 4

Edge Fidelity to 2

Click OK

Let's continue modifying this image to something different.

Go to: Filters – Distort - Twirl (Very slight)

Next, go to: Blur – Radial Blur – Zoom good to 15

Now let's Crop the image. Include only the lower right part of the Leaf Arrangement and make it a square 12"x12".

Save this image as "Zoomed Leaves – 12x12"

We are not done.

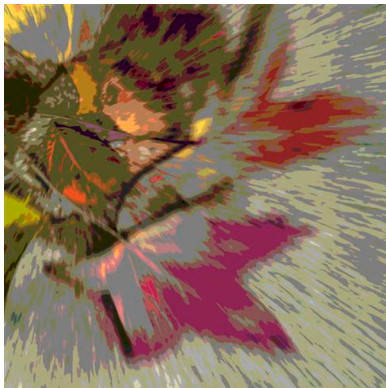
Go to Image – Adjustments – Posterize.

Level to 7

Save again: "Zoomed Leaves – 12x12 – Posterized"

Now, realize if the colors do not satisfy you, you can start altering them to get the look that you want by going to Image – Adjustments – Replace Color.

This piece might do very well in a girls bedroom, especially on canvas. I am not going to add a mat to this one since I like its simplicity and really only see it as a canvas piece.





Make duplicate image.

I selected this image randomly and decided to give it a different look that would evoke more interest.

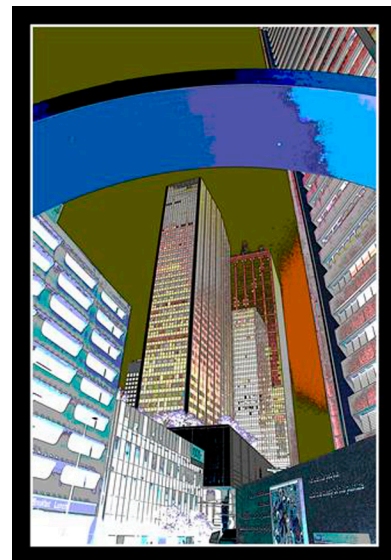
Go to: Image – Adjustments – Invert  
Then Posterize  
Level to 4  
Intensity to -3  
Posterization to 4

Save as: “Dallas through the Arch – Posterized”

To finish it off, once again let’s put a mat on it.

Go to: Image – Canvas Size  
Stroke with White at .15”  
Then add a mat at 1” Black

Save as: “Dallas through the Arch – Posterized – Black”



## **Eighth Image: Red Rock Crossing in Sedona, AZ**      Page 8



Make duplicate image.

This is a technique that doesn't actually change an images form into art, but gives an accent to an element in a photo.

First: Convert the duplicate image to B&W. No need to make it a perfect B&W because it will be secondary.

Go to: Image – Adjustments – B&W

Next: let's put the B&W image on top of the color image. Go to: Window – Arrange – Float in Window

Using the Move tool, drag the B&W image on top of the color image.

Next: Using the rectangular selection tool; select the area of the image that you want to be in color.

With the selection made, hit the delete key. This will punch a hole in the B&W Layer and bring the color through.

Deselect.

Flatten the image.

Now: Go to Edit – Stroke. In the drop down menu, make the width 3 Px and the color White. Select Outside for the placement of the stroke. Set the Blending Mode to Normal and the Opacity to 100%. Finally click O.K.

Next: Re-select the color portion of the image with the rectangular selection tool.

Using a large brush at say 174 px and 25% density, paint the edges of the selection to create more contrast with the background B&W balance of the image.

Deselect

Now, let's frame this image.

Go to: Image – Canvas Size. Since this image is fairly large, we need to select mats sizes that relate to the size of the image.

Start with a .75" White mat.

Then: Add a .15" Black stroke.

Next: Add a 2" White mat again.

Finish: With a .15" Black stroke

Save the image as “Red Rock Crossing – Accent – White”



## **“Creating Art from your Images”**

**by r.e. marabito – artist/photographer**

**Now, this just gives you a glimpse into what you can do with your images.**

**Just think, you don't have to go out and buy expensive artwork anymore. You can create it by yourself.**

**I hope you enjoyed this presentation. I have enjoyed presenting it.**

**For more information: Contact**

**R.E. (Ron) Marabito  
915 St. Lukes Dr.  
Richardson, TX 75080  
214-676-4046**

**[www.skylightartists.com](http://www.skylightartists.com)  
<http://picasaweb.google.com/remarabito>**